

Google maps

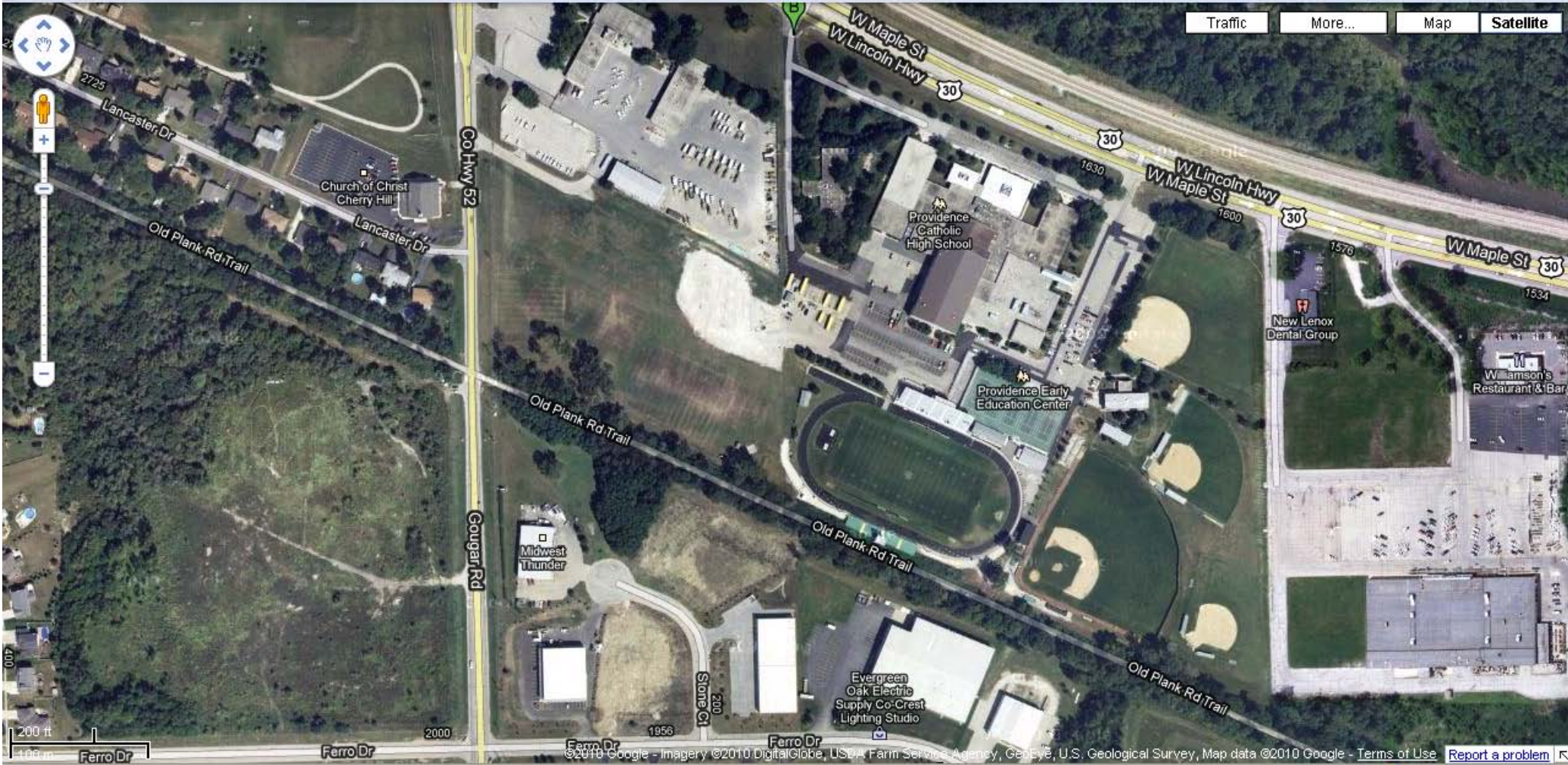
1800 West Maple Street, New Lenox, IL 60451-1693

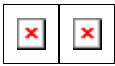
Search Maps

Show search options

Find businesses, addresses and places of interest.

Print Send Link





Notes

Trip to 1800 W Maple St
New Lenox, IL 60451-1693
6.49 miles - about 12 minutes

A Lockport, IL 60441



1. Start out going **EAST** on **E 8TH ST** toward **SUMMIT DR.** go 0.0 mi



2. Turn **RIGHT** onto **SUMMIT DR.** go 0.4 mi



3. Turn **LEFT** onto **E DIVISION ST.** go 1.3 mi



4. **E DIVISION ST** becomes **W 167TH ST.** go 0.4 mi



5. Turn **RIGHT** onto **N GOUGAR RD.** go 4.2 mi



6. Turn **LEFT** onto **W LINCOLN HWY / W MAPLE ST / E CASS ST / US-30 E.** go 0.1 mi

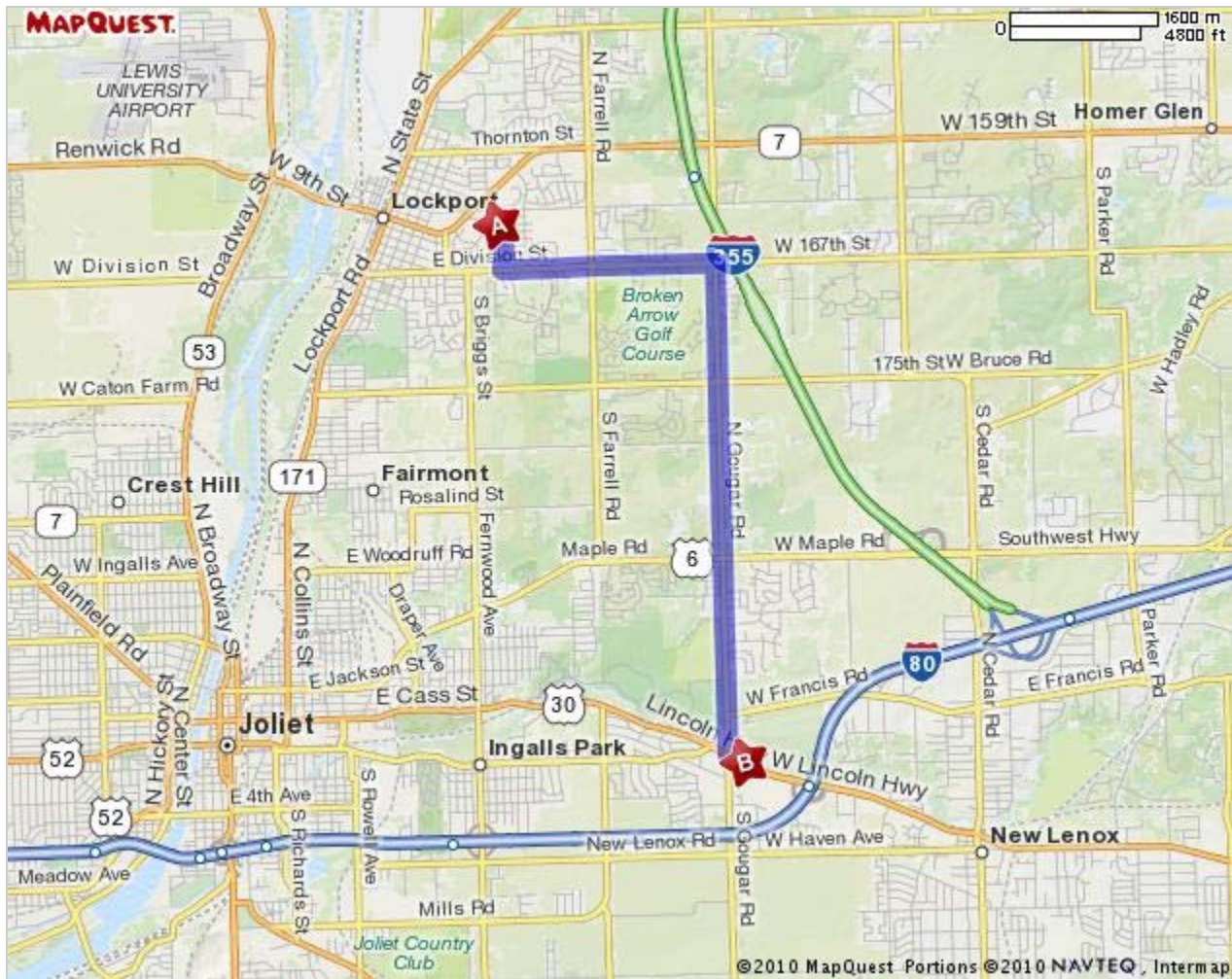


7. **1800 W MAPLE ST.** go 0.0 mi

B **1800 W Maple St, New Lenox, IL 60451-1693**

Total Travel Estimate : 6.49 miles - about 12 minutes

Route Map [Hide](#)



All rights reserved. Use subject to License/Copyright | [Map Legend](#)

Directions and maps are informational only. We make no warranties on the accuracy of their content, road conditions or route usability or expeditiousness. You assume all risk of use. MapQuest and its suppliers shall not be liable to you for any loss or delay resulting from your use of MapQuest. Your use of MapQuest means you agree to our [Terms of Use](#)